



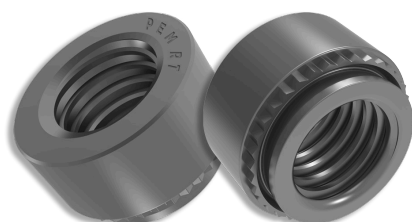
# PEM RT® FREE-RUNNING LOCKNUT

Get superior vibration-resistant locking performance with PEM RT®

The PEM RT® Free-Running Locknut reduces assembly time and improves joint reliability by keeping frictional torque in place – even in the harshest settings. And using the PEM RT® feature on PEM® self-clinching nuts provides the highest level of reliability and performance available on the market.

## HOW DOES IT WORK?

### Custom Engineered Thread Form



- PEM RT® has a 30° angle at the initial point of contact with the mating screw, unlike a standard flank angle which is 60° from the long axis of the fastener
- Modified angle resists transverse motion between the mating threads, keeping frictional torque in place during vibration

## PEM® CUSTOMIZATION

### Easy Assembly

- Modified thread angle of PEM RT® offers easier assembly, with the mating screw spinning freely during the attachment process until clamp load is applied during the screw-tightening process
- Compared to traditional locknuts, excellent joint clamp load remains consistent – regardless of how many on/off cycles

## RELIABILITY FOR MANY APPLICATIONS

Many industries and applications including automotive, industrial machinery, energy, and aerospace use the PEM RT® feature on PEM® self-clinching nuts to achieve the highest level of reliability and performance:

- ✓ Superior vibration resistance
- ✓ Reduced assembly time
- ✓ Improved joint reliability
- ✓ Less downtime
- ✓ Custom solutions available

*“The PEM RT® feature applied to a PEM faster outperforms any other locking device or adhesive application on the market. PEM RT® also requires zero additional parts or secondary operations, considerably reducing your assembly time.”*

Jennifer Lake, New Product Development Engineer

